



Springfield City Parks Master Plan

Springfield, FL



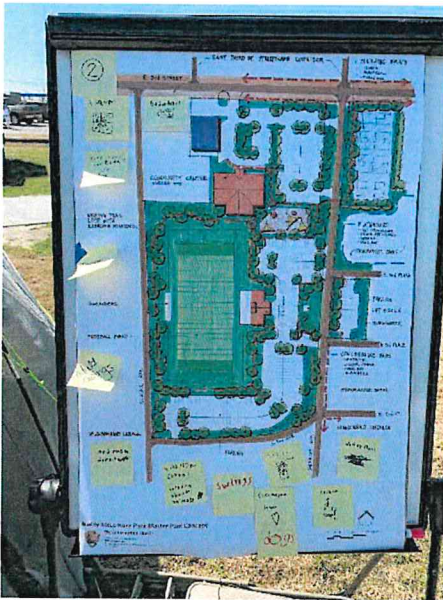
Overview

The following conceptual designs and recommendations were created by the National Park Service (NPS), with the assistance of Federal Emergency Management Agency (FEMA), from input by residents, community members and city officials following the damage of Hurricane Michael. The information contained in this plan is intended to assist the City of Springfield with decision making and implementation with redevelopment of the Henry

Brooks Memorial Park, Buddy McLemore Park, Springfield Gardens Walking Park, Springfield Sports Complex, 3 new park sites (Transmitter and Eleventh Street, Transmitter and Ten Acre Road, and Douglas and N. East Avenue).

Recommendations include new greenways and trails for connectivity to new and existing sites.

The information contained in this plan is intended to assist the City of Springfield with decision making and the implementation of the redevelopment of its parks. Pictures shown are examples of the narrative and are intended for illustration purposes only.



Federal Emergency Management Agency-Community Planning and Capacity Building Recovery Support Function (CPCB RSF): The mission of the CPCB RSF is to enable local governments to effectively and efficiently carry out community-based recovery planning and management in a post-disaster environment. CPCB also supports state or territorial governments in developing programs of support for local recovery planning.

The National Park Service Rivers, Trails, and Conservation Assistance program supports community-led natural resource conservation and outdoor recreation projects across the nation. Our national network of conservation and recreation planning professional partner with community groups, nonprofits, tribes, and state and local governments to design trails and parks, conserve and improve access to rivers, protect special places, and create recreation opportunities.



Incorporated in 1935, the City of Springfield is a community located in Bay County, east of Panama City, Florida (FL). On October 10, 2018, Hurricane Michael made landfall on the FL panhandle causing catastrophic and widespread damage in Bay County and Springfield. The city lost many structures and almost every structure sustained some form of damage. All the City's parks and recreation centers suffered severe damage. The damage ranged from flooding to loss of trees and structures.

As part of the recovery process, Federal Emergency Management Agency (FEMA) contacted the National Park Service (NPS) under an Interagency Memorandum to assist with effected areas of Hurricane Michael. The City of Springfield requested NPS assistance to develop recreational conceptual plans for the following areas: Henry Brooks Memorial Park, Buddy McLemore Park, Springfield Gardens Walking Park, Sports Complex, Nature Park at the new City Complex, proposed Nature Park (11th Street and Transmitter Road), and a large lot at Douglas Avenue.

Over the course of several months, NPS gathered information from Mayor Hammond and city officials regarding needs, maintenance issues, current, past and future usage.



To gather additional public input on the parks, NPS and the City worked together in numerous outreach forums:

- ❖ Two public meetings
- ❖ Survey on City's website
- ❖ Informational table at Founders' Day
- ❖ Two briefings at City Council meetings
- ❖ Interviewing users at park sites

The public meetings included existing maps of the parks and an overlay of possible development/facilities and questions to focus feedback. The same questions were used to develop the survey. NPS held several meetings with city officials to determine what was needed and desired at the both parks. The City requested the following:

- ❖ A natural space/ keep areas as natural as possible
- ❖ Location where senior community members could walk
- ❖ Play areas for children
- ❖ Re-envisioned Memorial area at Henry Brooks Memorial Park
- ❖ Additional trails and nature trails
- ❖ New ideas for existing recreational areas and proposed
- ❖ Possible connections to the parks via sidewalks and/or trails
- ❖ Exercise track



❖ Gazebos/Shade structures

The City held two public input meetings on December 3 and 5, 2019 at City Hall and Springfield Community Church. The public meetings were held during the day and evening to allow for the maximum participation. NPS staff also briefed the City Council to provide information on the program, explain the process and answer any questions. NPS received feedback from the Council regarding desires and questions. The second Council meeting was to update on the process, provide the conceptual concepts and receive approval.

During the public meetings, attendees discussed the need for

- ❖ Playgrounds/ play areas for children
- ❖ Benches
- ❖ Retaining existing shade trees
- ❖ Restroom facilities
- ❖ Hard surface trails
- ❖ Dog park
- ❖ Ability to access water
- ❖ Better organized parking

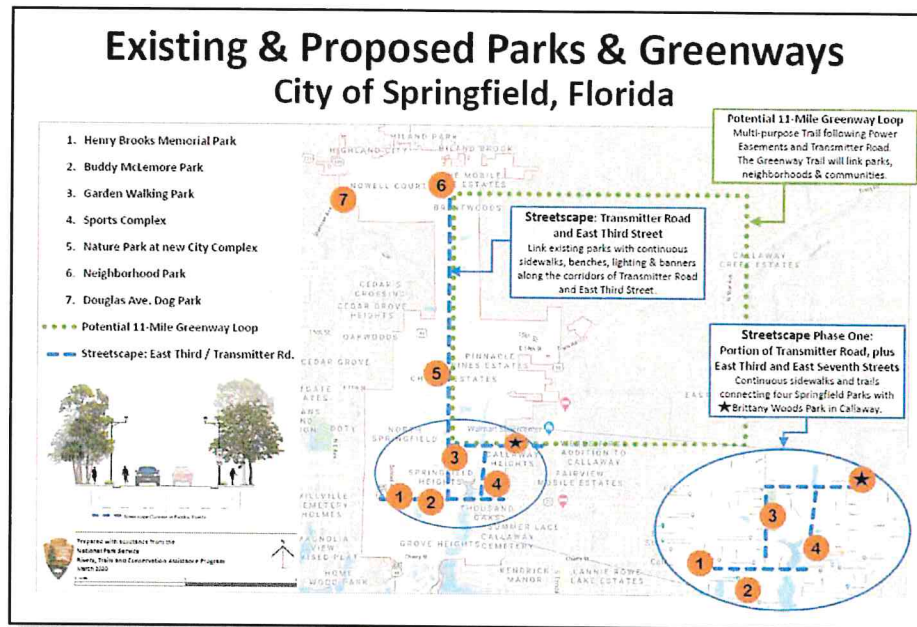
At Founders' Day, attendees reiterated the need for additional trails/walking paths, landscaping/beautification, shaded spots to sit, and playgrounds. Overall, attendees were happy with the renderings NPS drafted and excited about the opportunities for the City.

Based upon the input received, NPS developed conceptual plans for the City. NPS also included additional recommendations based upon opportunities observed during site visits and compilation of the concepts. These recommendations include:

- ❖ Developing a greenway/trail on the existing Utility corridor to connect Garden Walk Park to the Sports Complex
- ❖ Providing a small park at the front of the new city facilities to create a family friendly welcoming environment to visitors and residents that visit the facilities
- ❖ Water features that would also perform duties for stormwater management as well as beautification for the City
- ❖ Linkages to the City's parks via bike lane, sidewalks or trails
- ❖ Creating beautification corridor to highlight assets of the City



Master Plan Concepts and Recommendations



Potential Regional Greenways & Streetscape Corridors

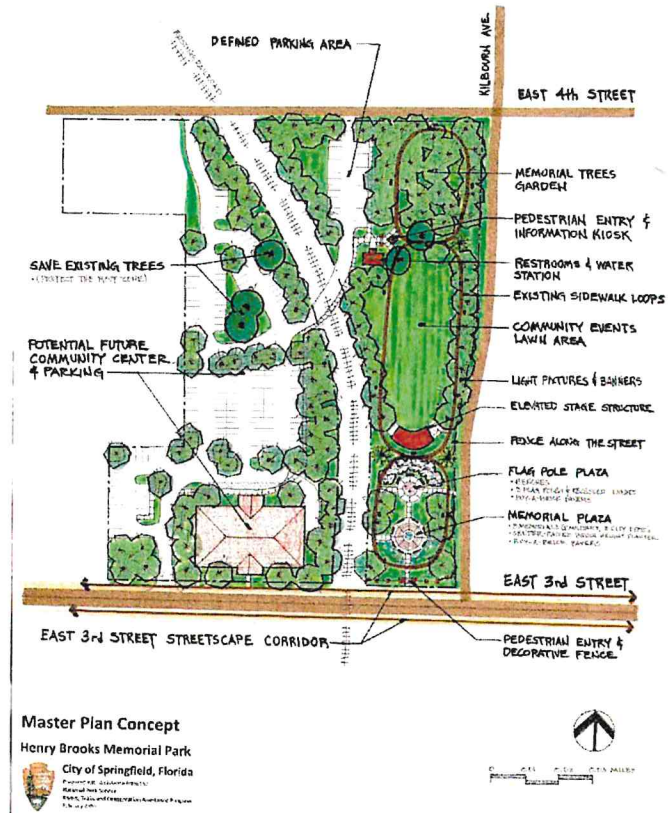
❖ Potential 11 Mile Greenway Multi-Use Trail Loop

- A Regional 11 Mile Multi-Use Trail Loop can be created to link several neighborhoods in the City of Springfield and the City of Callaway. This regional greenway corridor is a rectangle consisting of four segments. The loop will follow existing utility company powerline easements on the north, east and south segments, and Transmitter Road on the west segment. There will need to be signalized pedestrian crosswalks where the greenway trail will cross existing roadways. Trailhead facilities will need to be created along the Greenway in both Springfield and Callaway and the trailheads should include parking, restrooms, information kiosks, and water station facilities.

❖ East 3rd Avenue & Transmitter Road Streetscape

- A streetscape includes the visual elements of a street, the road, adjoining buildings, street furniture, trees and open spaces, etc., that combine to form the street's character. A streetscape also provides for sidewalks and alternative transportation opportunities such as strollers, wheelchairs and/or bicycles.
- Recommend the preparation of a streetscape master plan for East 3rd Street and Transmitter Road Corridor to help create an identity for the City of Springfield.





Henry Brooks Memorial Park

- ❖ Existing Features & Sidewalk Loops
 - Repair sidewalks as needed
 - Retain existing trees
 - All sidewalks to meet ADA Standards
- ❖ East 3rd Street Access & Streetscape
 - Entry sidewalk, Entry Arch & Sign
 - Decorative Fencing
 - 3rd Street Streetscape (Sidewalks, Landscaping, Lighting, Benches, etc.)
- ❖ Memorial Plaza
 - Memorial Monuments (Eight Monuments)
 - Military
 - Army
 - Airforce
 - Navy



- Marines
- Coast Guard
- City Departments
 - Police
 - Fire
 - City Workers
- Temporary flagpole mounts behind each monument
- Center Raised Bench/Planter
- Brick Plaza (Buy-A-Brick Funding Opportunity)
- Sidewalk Linkages to the Existing Sidewalk Loop
- Landscaped hedge to define the front half of the plaza



❖ **Flagpole Plaza**

- 3 Lighted Flagpoles
 - American Flag
 - Florida Flag
 - Springfield City Flag
- Benches
- Brick Plaza
- Sidewalk Linkages to the Existing Sidewalk Loop
- Flowering Trees (Backdrop for the Memorial & Flagpole Plazas)
- Perimeter Shade Trees to define the space
- Fencing along Kilbourn Avenue

❖ **Community Events Lawn Area**

- Elevated Stage & Shade Structure
 - ADA accessible ramp
- Perimeter Shade Trees to define the space
 - Memorial Trees
- Fencing along Kilbourn Avenue



❖ **Memorial Trees Garden**

- Shade & Understory Trees
 - Memorial Trees
- Fencing along Kilbourn Avenue & East 4th Street

❖ **East 4th Street Access**

- Entry & Wayfinding Signage
- Define and organize parking
- Maintain the existing street access and railroad crossing
- Sidewalks and Pedestrian Entry to the Memorial Park
- Restrooms, Information Kiosk & Water Station



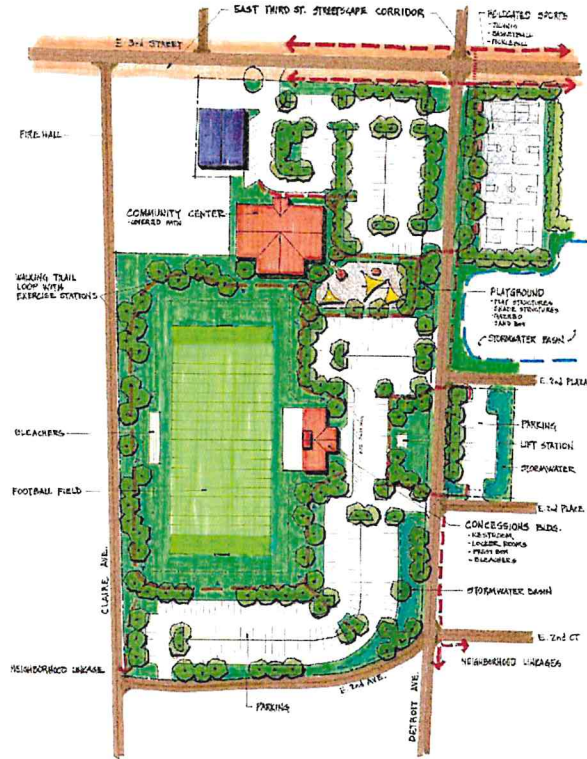
❖ **Community Center**

- Signage
- Meeting Rooms, Restrooms & Kitchen
- Parking behind the building
- Overflow Parking for the Park
- Retain and protect the existing Shade Trees
- 3rd Street Streetscape (Sidewalks, Landscaping, Lighting, Benches, etc.)

❖ **Memorial Tree Planting Program**

- Retain the services of a local Landscape Architect to create a Memorial Tree Planting Plan for the Park. Identify the cost for installation of each tree species.
- Post the plan and memorial tree costs on the City Website and the Information Kiosk in the park.



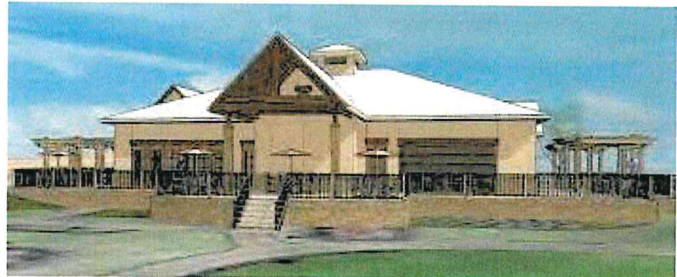


Buddy McLemore Park Master Plan Concept
 City of Springfield, Florida
 City of Springfield
 Parks Department
 Planning & Design Services

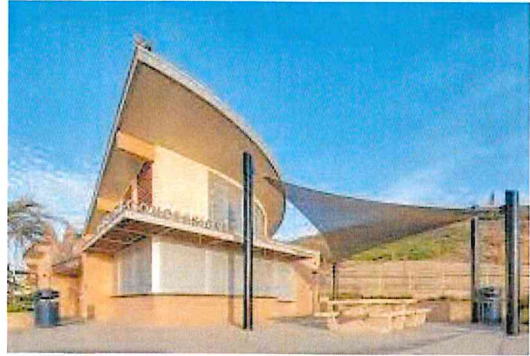


Buddy McLemore Park

- ❖ **Rebuild Community Center**
 - Meeting Rooms, Kitchen, Restrooms, Storage
 - Shaded Patio (Overlooking the park facilities)
 - Reorganize Parking and Access
 - Shade Tree Plantings
 - Signage
 - Rebuild that emphasizes the culture of the community with an enduring style
- ❖ **Rebuild Football Stadium**
 - Signage
 - Orient the Football Field to a North/South alignment



- Concessions Building
 - Restrooms
 - Locker Rooms
 - Concessions
 - Storage
 - Bleachers
- Access Control Fencing
- Bleachers
- Sports Field Lighting Fixtures
- Irrigation
- Bus Parking and Drop-off
- Retain the existing Sewage Lift Station along Detroit Avenue
- Create organized parking areas and limit access



❖ **Relocate Playground**

- Fenced enclosure with one access
- Gazebo & Shade Structure with Benches
- Tensile Shade Structures over play equipment
- Play Structures (All age groups)
- Approved Soft Surfaces (Safety)
- Sandbox
- Shade Trees

❖ **Walking Trail Loop**

- Hard surface walking trail loop
- Meet ADA Standards
- Walkway Lighting Fixtures
- Exercise Stations
- Benches
- Shade Trees

❖ **Relocate Court Sports**

- Tennis Court
- Basketball Courts
- Pickleball Courts
- Shade Structures & Benches
- Sidewalk Linkage from the Loop Trail to the East 3rd Street Streetscape Corridor Linkages
- Shade Trees



❖ **Develop Stormwater Detention Basins**

- Large Stormwater Detention Basin for the Florida Department of Transportation
- Several smaller Detention Basins adjacent to new parking areas linked together
- Shade Tree Plantings around the perimeter of the basins to absorb stormwater



❖ **3rd Street Streetscape**

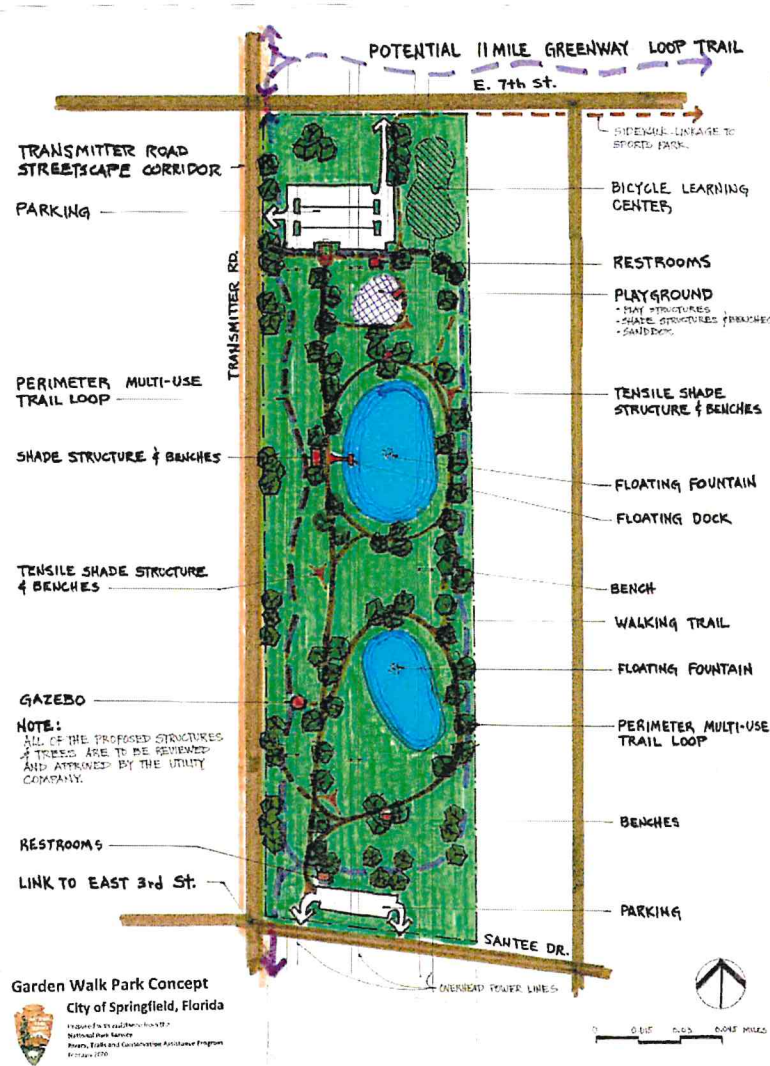
- Sidewalks, Landscaping, Lighting, Benches, etc.
- Combination of features to unify the street corridor and facilitate safe pedestrian and bicycle circulation

❖ **Neighborhood Linkages**

- Future sidewalk connections into the adjoining neighborhoods to link to the park

❖ **Memorial Tree Planting Program**





Springfield Gardens Walking Park

- ❖ Existing Walkway Loops
 - Repair and maintain existing walkway loops as needed
 - Maintain and repair the existing walkway lighting as needed
 - All walkways to meet ADA Standards
- ❖ Additional Multi-Use Trail Loop
 - Add new Multi-Use Trails on the outside perimeter of the park
 - 8 feet wide
 - Pedestrians circulate clockwise and bicycles circulate counter clockwise
- ❖ Linkages & Connections



- North - Extend trail to the intersection of Transmitter & East 7th Street provide a signalized pedestrian crossing to safety connect to the Potential 11 Mile Greenway Loop Trail
- South – Extend the Multi-Use trail to the intersection of Transmitter & East 3rd Street along the east side of Transmitter Road
- East – Create a sidewalk connection to the Sports Park along the south side of East 7th Street

❖ **Bicycle Learning Center**

- Low Speed Trail Loops for tricycles and beginner bicyclist
- Mt. Bike Pump Track Facilities
- Bicycle Rules Signage
- Shade Structures & Benches
- Water Station
- Bicycle Repair Station
- Linkages to the 11 Mile Greenway Multi-Use Trail Loop & the Sports Park



❖ **Define Parking Areas**

- Define and control vehicle circulation and parking
- Wayfinding signage
- Trailhead for the 11 Mile Greenway Loop

❖ **Restroom Facilities**

- Restrooms and Park Information Kiosks at both park entrances
- Water Stations
- Trash Receptables

❖ **Playground & Shade Structures**

- Shade Structure with Benches
- Tensile Shade Structures over play equipment
- Play Structures (All age groups)
- Approved Soft Surfaces (Safety)
- Sandbox
- Shade Trees (As approved by the Utility Company)

❖ **Shade Structures**

- Shade Structures & Benches
- Tensile Shade Structures & Benches (Tensile Structures will add color to the park facilities)
- Gazebo & Benches



❖ **Floating Fountains**

- Provide a floating fountain for both park ponds
- Consider a timer for the fountains and a timer for their lighting

❖ **Floating Dock**

- Provide a floating pier/dock with safety rails to observe the Koi Fish in the pond
- Consider a coin operated feeding station located above the flood level of the pond



- No Fishing – Signs

❖ **Tree Planting**

- Coordinate a tree planting plan with the Utility Company to provide some shaded areas along the existing and proposed trails
- Consider a Memorial Tree Plan Program for the Garden Walk Park





Sports Park

❖ Parking Expansion

- Expand the existing parking area to the south to add a bay of 90-degree parking along the drive
- Adjust drainage as needed to facilitate the additional parking
- Create a new parking area with access to Martin Court Street north of the football field

❖ Sports Fields Improvements

- Repair and/or replace all the sports lighting systems, bleachers, fencing, dugouts, concessions/restrooms facility, scoreboards, etc.
- Provide water stations at the Concessions Facility
- Add additional bleachers and scoreboards for the Football Field
- Capture stormwater drainage from the east side of the football field with catch basins and underground stormwater drainage pipes and outlet into the existing detention basin

❖ Playground Facilities

- Remove existing playground fencing



- Expand the area of the playground with additional play structures to accommodate all age groups
- Provide Tensile Shade Structures to help shade the play equipment
- Provide Shade Structure and benches

❖ **Walking Trail Loop**

- Improve and adjust the location of the existing Sports Park Loop Trail
- Hard surface the trail and add trees, lighting, benches and exercise stations along the trail
- All trails to meet ADA Standards
- Provide Wayfinding Signage in the park

❖ **Dog Park Facilities**

- Trailhead Facilities
 - Parking
 - Restrooms
 - Water Station
 - Information Kiosk
- Road access from East 7th Street
- Fenced enclosure for dog off leash exercise and socializing
- Shade Structures and Benches
- Shade Trees
- Large rocks/boulders and or slope/hills with mounds of dirt



❖ **Picnic Shelter**

- Shade Structure & Picnic Tables
- Potential parking area off Flight Avenue

❖ **Linkages & Connections**

- North & West – Link a trails system north from the Revised Sports Park Loop Trail to the Proposed Dog Park and East 7th Street. Create a sidewalk west to the Garden Walk Park along the south side of East 7th Street and a section of sidewalk east to the intersection of East 7th Street and Flight Avenue, provide a signalized crosswalk across East 7th Street to connect to the Potential 11 Mile Greenway Loop.
- East – Link the Revised Sports Park Loop Trail to the park entrance on North Hwy. 22A. Provide a crosswalk from the park to the sidewalk on the east side of North Hwy. 22A to connect additional neighborhoods to the park.





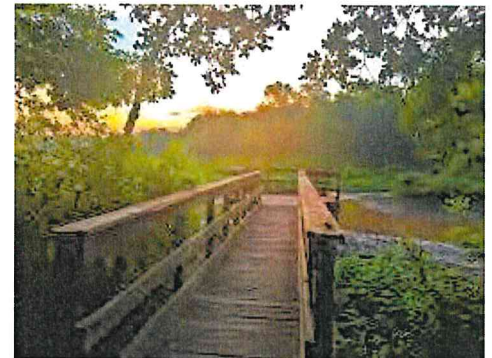
Nature Park

❖ Trailhead Facilities

- Park Sign and Wayfinding Signage
- Parking
- Restrooms
- Information Kiosk
- Decks & Boardwalk to the Bridge

❖ Boardwalk Loops

- Boardwalk Loop with interpretation stations
- Benches and Shade Structures
- All boardwalks to meet ADA Standards
- Future Boardwalk Loops



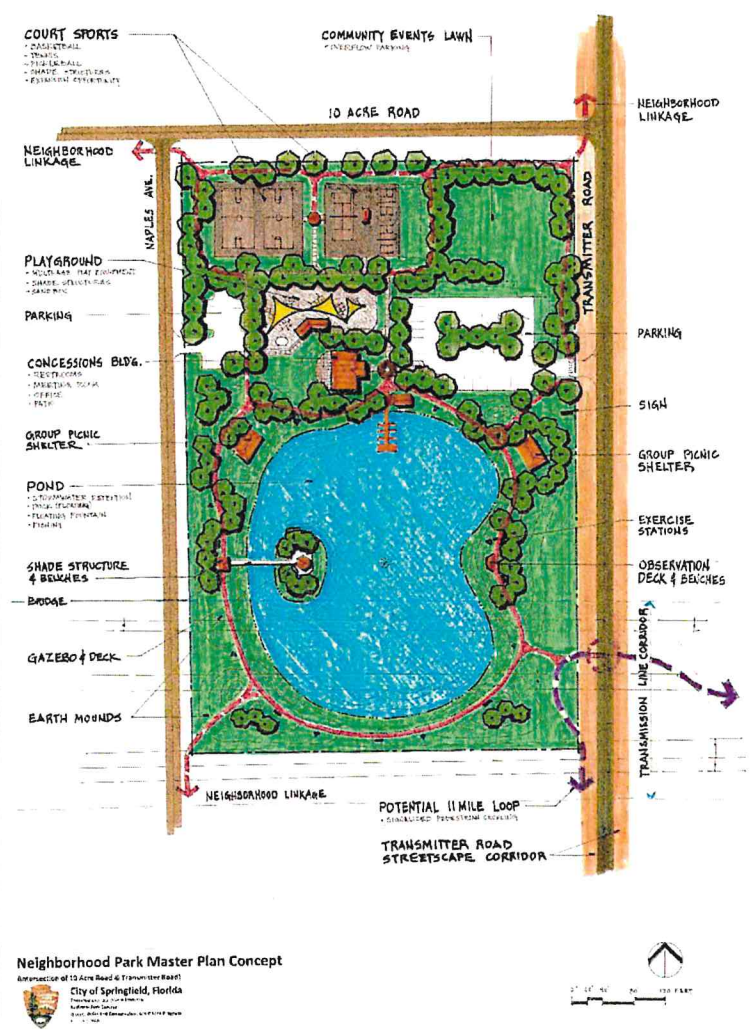
❖ **Stormwater Pond**

- Remove trees and excavate a pond to receive stormwater runoff from the future City Complex
- Water edges will enhance wildlife viewing opportunities

❖ **Linkages & Connections**

- Link to the Proposed City Complex Corner Park and the Transmitter Road Streetscape Corridor
- Potential Trailhead for the 11 Mile Greenway Loop





Neighborhood Park (10 Acre Road & Transmitter Road)

- ❖ **Concessions Building**
 - Meeting Rooms (Potential rental income)
 - Kitchen
 - Restrooms
 - Office
 - Sitting area



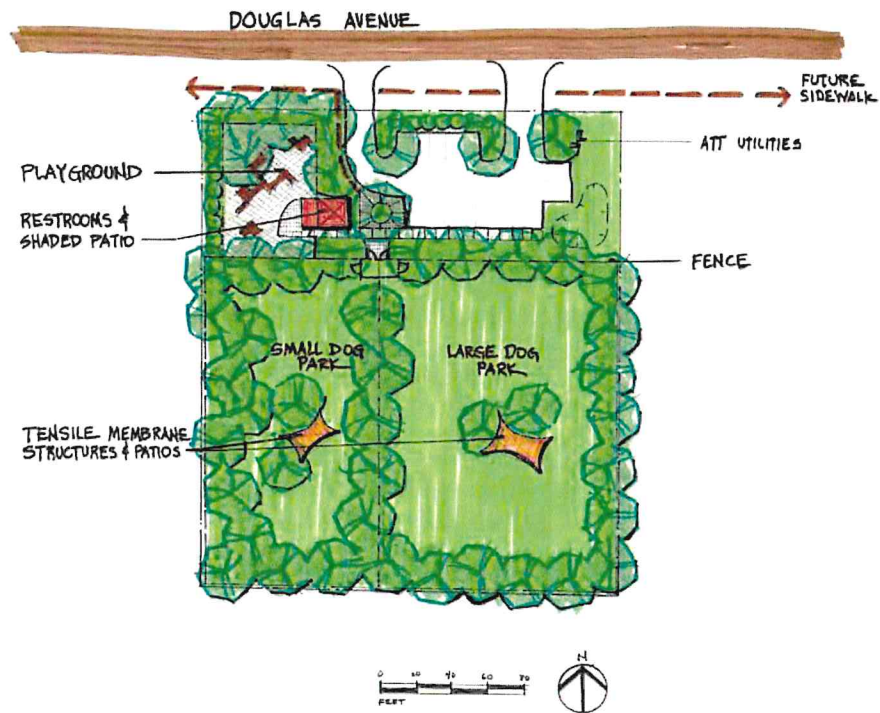
- Concessions Area
- Patio
- ❖ **Parking**
 - Larger Parking Area off Transmitter Road
 - Smaller Parking Area off Naples Avenue
- ❖ **Court Sports**
 - 2 - Basketball Courts
 - 1 – Tennis Court
 - 2 – Pickleball Courts
 - Pickleball Court Expansion Area
 - Shade Structures & Benches
 - Fencing
- ❖ **Community Events Lawn**
 - Area for Community Events (Tents, Vendors, Food Trucks, etc.)
 - Overflow turf parking area
- ❖ **Playground**
 - Shade Structure with Benches
 - Tensile Shade Structures over play equipment
 - Play Structures (All age groups)
 - Approved Soft Surfaces (Safety)
 - Sandbox
 - Shade Trees
- ❖ **Pond**
 - Stormwater Detention area & Fishing Pond
 - Floating Dock
 - Paddleboat Rental
 - Island, Bridge, Deck & Gazebo
- ❖ **Walking Trail Loop**
 - Hard surface trail
 - Shade Structures & Benches
 - Benches, Exercise Stations & Safety Lighting
 - All trails to meet ADA Standards
 - Pedestrian circulation counterclockwise and bicycle circulation clockwise
 - Shade Trees
- ❖ **Picnic Shelters**
 - Group Picnic Shelters (Potential rental opportunities)
 - Picnic Tables & Trash Receptables



❖ Linkages & Connections

- East – Following an existing Transmission Line Corridor there is an opportunity for a regional 11 Mile Greenway Multi-Use Trail Loop.
- South – Transmitter Road Streetscape to East 3rd Street will be the west segment of the potential regional 11 Mile Greenway Multi-Use Trail Loop with the other segments following powerline easements.
- North & West – Future sidewalk links from the Neighborhood Park into the existing adjoining neighborhoods





Douglas Avenue Park Master Plan Concept
 City of Springfield, Florida
 Prepared with assistance from the
 National Park Service
 Rivers, Trails and Conservation Assistance Program
 January 2020

Douglas Ave. Park

❖ Trailhead

- Restrooms, Information Kiosk, Water Station, Shade Structure Facility
- Parking
- Signage
- Future sidewalks to connect the park to residential areas



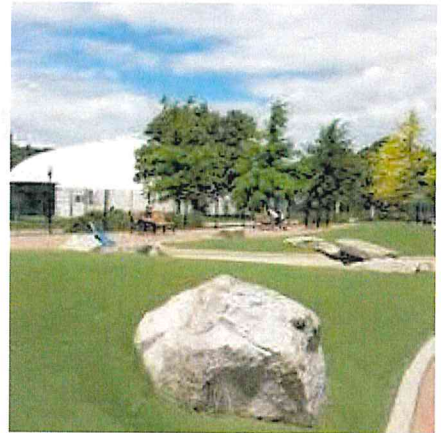


❖ **Playground**

- Shade Structure with Benches
- Tensile Shade Structures over play equipment
- Play Structures (All age groups)
- Approved Soft Surfaces (Safety)
- Fenced Enclosure
- Shade Trees

❖ **Dog Park**

- Double Gate access to a fenced large and small dog area
- Shade Structures and Benches
- Shade Trees
- Use rocks or hills to create



General Recommendations:

❖ Branding/Image

- Provide continuity of style with all government buildings, community centers and concession buildings to create an “image” for the City

❖ Signage

- Create signage with a common theme or branding for the City
 - Signage should be inviting and natural that showcases the City
- Signs and Kiosks should be durable and able to withstand elements such as rain and sun
- Large signage that is open and inviting for the entrances
- Kiosks at the entrances of the parks and key strategic points
 - Kiosks should contain maps with the amenities of the park (locations), park rules, information (rental, etc), events

❖ Park Rules

- Park rules will need to be adopted and a sign listing the rules posted at each of the parks

❖ Memorial Tree Planting Plan

- Create a Memorial Tree Planting plan to help develop a future tree canopy in all the City Parks with the assistance of a local Landscape Architect. Use tree species that are native and ornamentals that have a proven track record as parkland trees
- Create a list of trees and the cost to have them planted in the park so that the public can select the park, location and the recommended species of tree
- Identify the memorial trees and the donors on a map in City Hall, the park information kiosk and the City Website

❖ Notifications

- Notify adjacent neighbors of large events (concerts, weddings, etc) in advance that would be for awareness and potential noise
- Provide notification at kiosks and City’s website/social media of events so that others that enjoy the park are aware of other activities

❖ Community Involvement

- Involve residents (especially surrounding neighbors) in events, planting, litter clean up beautification work days

❖ Revenue

- Rental of space for bouncy houses, weddings
- Food trucks and community events (ie Taste of Springfield, Movie on the Green, Farmers’ Market)
- Solicit community members, churches, local organizations, and businesses to sponsor structures, signage and landscaping



Next Steps:

❖ Park Rules

- Park rules will need to be adopted and a sign listing the rules posted at each of the parks

❖ Site Plans & Probable Cost Estimates

- Recommend that the City of Springfield hire a local landscape architecture firm or engineering firm to develop a detailed site plan for each of the parks and prepare a probable cost estimate for all the proposed features identified in the Master Plan Concept for each of the parks.

❖ Prioritization

- Once the cost estimates are provided, prioritize projects to start implementation
- Start with low hanging easy projects and have a kickoff event to get the community involved
- Complete in phases while updating community of progress and status

❖ Funding Strategies

- Determine which priorities and which projects can be completed in house
- See above funding revenue to fund projects
- Ensure to account for work/finances that can match different grants
- See Appendix for grant sources and links
- Develop a nonprofit Friends of the Park group that can fundraise and apply for grants designated for non-profit. Organize light maintenance, clean up days, community events. If an existing non-profit organization can partner with the City to meet these goals, consider developing a Memorandum of Understanding/Agreement (MOU/MOA) to apply for funds.



Appendix 1: Public Meeting Input

The following pages list the ideas generated during the public input process meetings on December 3 & 5, 2019 for the parks in the City of Springfield.

- Henry Brooks Memorial Park Public Input
- Buddy McLemore Park Public Input
- Garden Walk Park Public Input
- Sports Park Public Input
- Nature Park Public Input
- Neighborhood Park Public Input
- Douglas Avenue Park Public Input

Henry Brooks Memorial Park Public Input - Brainstorming Ideas
 City of Springfield, Florida
 December 3 & 5, 2019

Location: East 3rd Street

Park Facilities Ideas

- Retain the three sidewalk loops
- Create a memorial plaza (3 memorials: 5 military branches & 3 city departments)
- Three lighted flag poles
- Temporary flag poles for each of the memorials
- Buy-A-Brick plaza
- Pedestrian entry features (Parking area & East 3rd St.)
- Decorative fencing (Limited areas)
- Control vehicle access
- Controlled asphalt parking area
- Restroom facility & water station
- 30 new trees have been planted
- Plant additional trees
- Benches on concrete pads
- Community Events Lawn
- Elevated Shade Structure (Stage)
- Save existing shade tree
- Shaded benches
- Walkway & memorial features lighting

Additional Recommendations

- Implement a Memorial Tree Planting Program
- All proposed facilities to be ADA accessible

Henry Brooks Memorial Park Ideas List December 2019 Page 1

Buddy McLemore Park Public Input - Brainstorming Ideas
 City of Springfield, Florida
 December 3 & 5, 2019

Location: East 3rd Street

Park Facilities Ideas

- Rebuild the Community Center (Events Facility)
 - Restrooms
 - Meeting space for rent
 - Patio
- Organized asphalt parking (Control vehicle access)
- Move playground near the Community Center and the Sports Field
 - All age groups
 - Include a sandbox
- Revise the Football Field Facilities (Explore layout options)
 - Lighting
 - Bleachers
 - Restrooms
 - Concessions
 - Locker Rooms
 - Bus Parking
- Consider a hard surface walking trail around the football field
 - Benches on concrete slabs
 - Shade structures
 - Water station
- Do not disturb the existing sewer lift station near Detroit Ave.
- Add the stormwater retention area for the highway runoff (Agreement with DOT)
- Adjust the location of the court sports
 - Basketball
 - Tennis
 - Pickleball
- Lots of kids live near this park (Safe linkages and sidewalks)

Additional Recommendations

- Implement a Memorial Tree Planting Program
- All proposed facilities to be ADA accessible

Buddy McLemore Park Ideas List December 2019 Page 1



Garden Walk Park Public Input - Brainstorming Ideas List
City of Springfield, Florida

December 3 & 5, 2019

Location: Transmitter Road & 7th Street

Park Facilities Ideas

- Establish restroom facilities at each entry to the park near the parking lots
- Establish new play structures, sandbox, benches and shade structures (Play area complex)
- Develop additional benches on concrete pads along the walkways
- Create additional walkway loops
- Add gazebos at the north and south end of the park
- Provide additional shaded sitting areas along the walkways
- Organize and pave both of the existing parking areas (Control the vehicle access)
- Plant more trees (Respect the overhead power lines in the placement and size of the new trees)
- Provide a dock on the larger pond
- Consider a fish feeding station
- Existing Koi, Bass and Catfish in the ponds
- Add picnic tables
- Exercise stations along the walkways
- Crosswalk at the intersection of xx and Transmitter Road to link the park to a potential Regional Trail Loop (11 miles) for walking, bicycles, skateboards, etc. (Paved Multi Use Trail System)
- Existing lighting system is adequate for safety

Additional Recommendations

- Implement a Memorial Tree Planting Program
- All proposed facilities to be ADA accessible

Sports Park Public Input - Brainstorming Ideas
City of Springfield, Florida

December 3 & 5, 2019

Location: North Highway 22A

Sports Park Facilities Ideas

- Restore all of the existing sports fields facilities (2 baseball fields and 1 football/soccer field)
- Add additional bleachers and new scoreboards for all three fields
- Install pipe in the drainage ditch to expand useable area
- Hard surface the walking trail loop
- Add Benches on concrete pads along the walking trail loop
- Create additional parking area off of Martin Court Road (North side of the park)
- Rock climbing wall
- Create a multi-use path north from the Sports Park along the natural area to East 7th Street and west along the south side of E. 7th St. to the Garden Walk Park

City Property North of the Sports Park Ideas

- Potential Dog Park site
 - Fencing
 - Water
 - Shade structure
 - Doggie Bag Station
- Access and parking off of E. 7th Street
- Plant Trees
- Multi-use path along the outside of the dog park fence to link the Sports Park to the Garden Walk Park

Additional Recommendations

- Implement a Memorial Tree Planting Program
- All proposed facilities to be ADA accessible
- Small swimming pool is needed the community somewhere (A place for kids to learn to swim!)

Nature Park Public Input - Brainstorming Ideas
City of Springfield, Florida

December 3 & 5, 2019

Location: East 11th Street

Park Facilities Ideas

- Nature based park in a wetland setting
- Access from 11th Street near the Future City Complex
- Boardwalk trails
- Parking area
- Restrooms
- Shade structures
- Information kiosk
- Interpretation signs

Additional Recommendations

- All proposed facilities to be ADA accessible

10 Acre Rd. Neighborhood Park Public Input - Brainstorming Ideas
City of Springfield, Florida

December 3 & 5, 2019

Location: Intersection of Transmitter Road & 10 Acre Road

Park Facilities Ideas

- Pond & stormwater retention
 - Floating water feature (Fountain)
 - Floating dock
 - Paddleboat rental
- Community Center
 - Restrooms
 - Water station
 - Meeting room
 - Outdoor patio
- Plant trees
- Play structures
- Walking trails
- Exercise stations along the walking trails
- Access from Transmitter Road and Naples Road
- Gazebo
- Create earth mounds to provide undulating grades for the walkways with overlook decks
- Court Sports
 - Basketball
 - Tennis
 - Pickleball
- Shade structures
- Benches on concrete slabs
- Picnic Shelter
- Parking and vehicle access control

Additional Recommendations

- Implement a Memorial Tree Planting Program
- All proposed facilities to be ADA accessible



Douglas Avenue Park Public Input - Brainstorming Ideas
City of Springfield, Florida

December 3 & 5, 2019

Location: Near the intersection of Douglas Ave. & N. East Avenue

Park Facilities Ideas

- Potential Dog Park
 - Fencing
 - Water
 - Shade structure
 - Doggie Bag Station
 - Dog play features
- Plant trees
- Water splash area for dogs
- Benches on concrete pads
- Play structure
- Skate park
- Parking and vehicle access control

Additional Recommendations

- Implement a Memorial Tree Planting Program
- All proposed facilities to be ADA accessible



Appendix 2: Founders' Day Ideas

February 29, 2020
Henry Brooks Memorial Park

Location: Douglas Avenue Park

- ❖ Dog Agility Course
- ❖ Swings and slides in playground
- ❖ Ramps
- ❖ Cute and Functional

Location: Neighborhood Park

- ❖ Paddle boats
- ❖ Allow dogs
- ❖ Fishing

Location: Nature Park

- ❖ Paddle Boats
- ❖ Allow dogs
- ❖ Fishing

Location: Garden Walk Park

- ❖ Fitness Trail
- ❖ Potential to be landmark playground/park
- ❖ Restock fish

Location: Henry Brooks Memorial Park

- ❖ Stage is key to community events
- ❖ If you create a place for the community to come to, people would love to move there

Other Recommendations:

- ❖ Beautification/Landscaping
- ❖ Bike trail needed—not one of length anywhere



Appendix 3: Survey Results

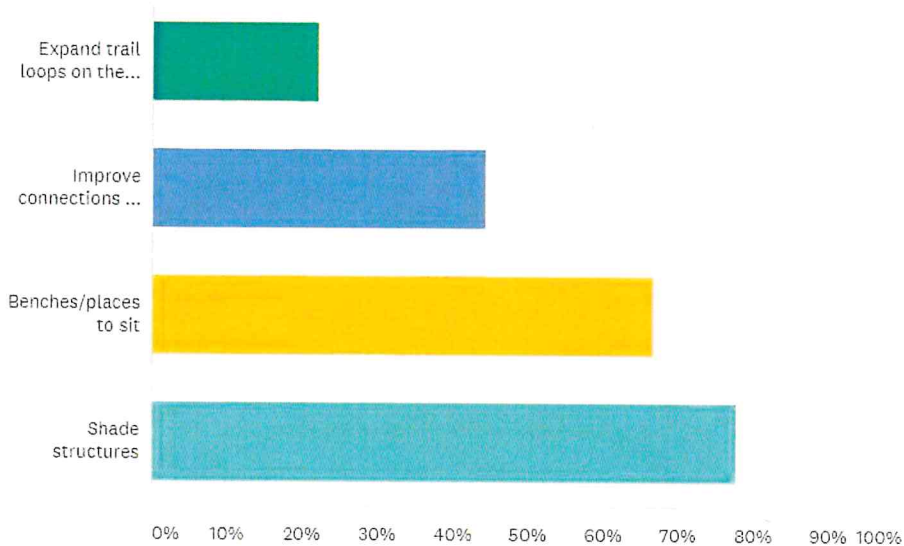
What improvements would you like to see at Buddy McLemore Park?

Answered: 6 Skipped: 3

ANSWER CHOICES	RESPONSES	
Football Field Area	16.67%	1
Playground Area	66.67%	4
Other (please specify)	83.33%	5

What improvements would you like to see at Springfield Gardens Walking Park?

Answered: 9 Skipped: 0



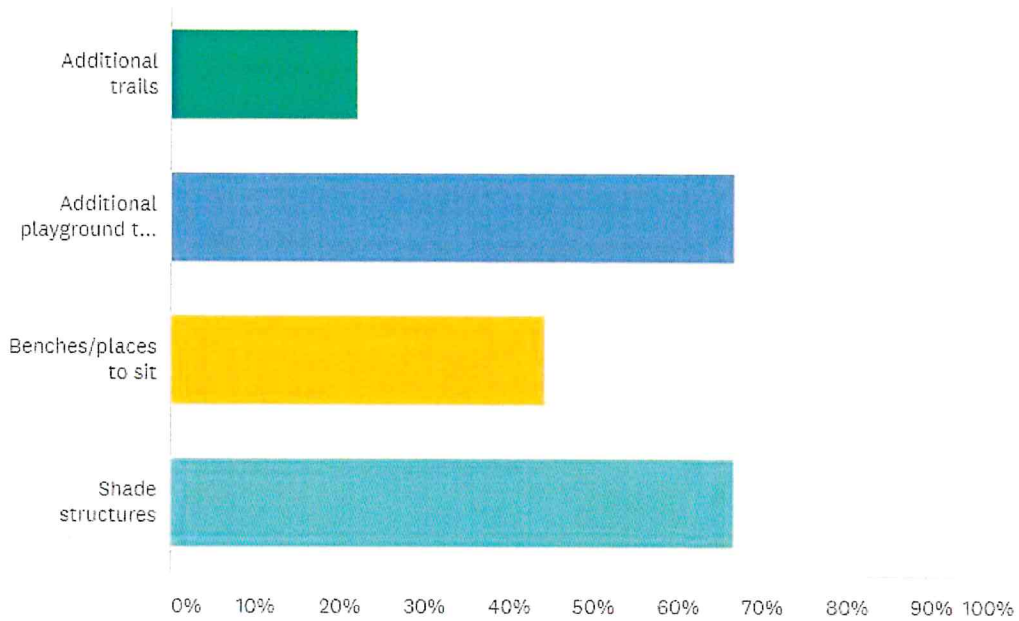
ANSWER CHOICES	RESPONSES	
Expand trail loops on the site	22.22%	2
Improve connections to other trails/greenways/parks	44.44%	4
Benches/places to sit	66.67%	6
Shade structures	77.78%	7

Total Respondents: 9



What improvements would you like to see Springfield Sports Complex?

Answered: 9 Skipped: 0



ANSWER CHOICES

- Additional trails
- Additional playground to accommodate various ages
- Benches/places to sit
- Shade structures

RESPONSES

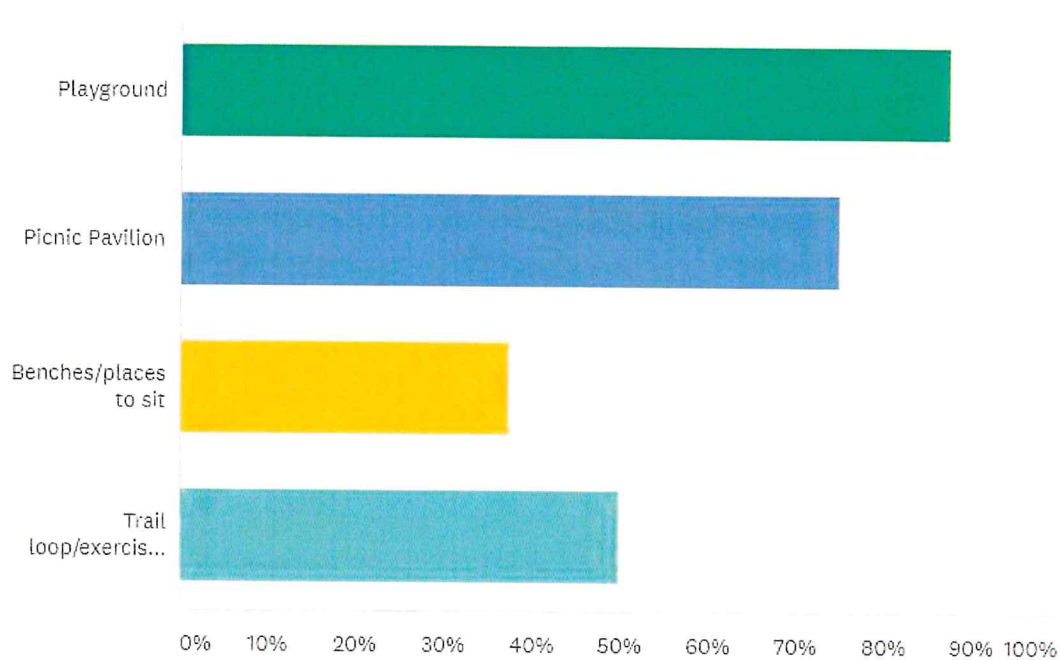
Additional trails	22.22%	2
Additional playground to accommodate various ages	66.67%	6
Benches/places to sit	44.44%	4
Shade structures	66.67%	6

Total Respondents: 9



What would you like to see at Douglas and N. East Ave. Intersection site? (This is a vacant space intended to be a neighborhood park for surrounding homes)

Answered: 8 Skipped: 1



ANSWER CHOICES

RESPONSES

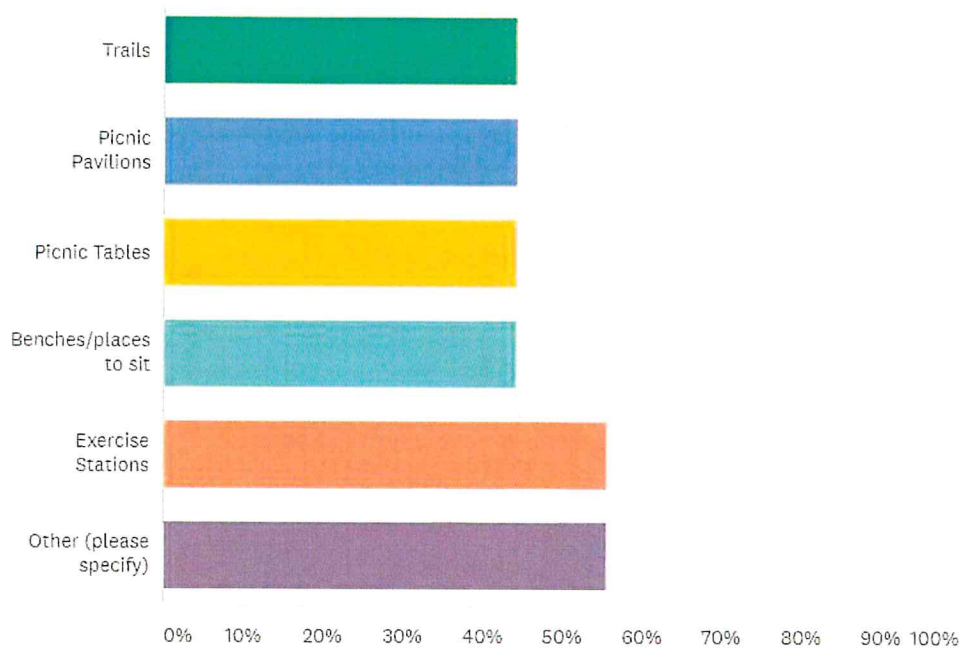
Playground	87.50%	7
Picnic Pavilion	75.00%	6
Benches/places to sit	37.50%	3
Trail loop/exercise trail	50.00%	4

Total Respondents: 8



What would you like to see at Transmitter Road & 11th Street Nature Site?(The city would like to keep this site as natural as possible with passive recreational opportunities)

Answered: 9 Skipped: 0



ANSWER CHOICES

RESPONSES

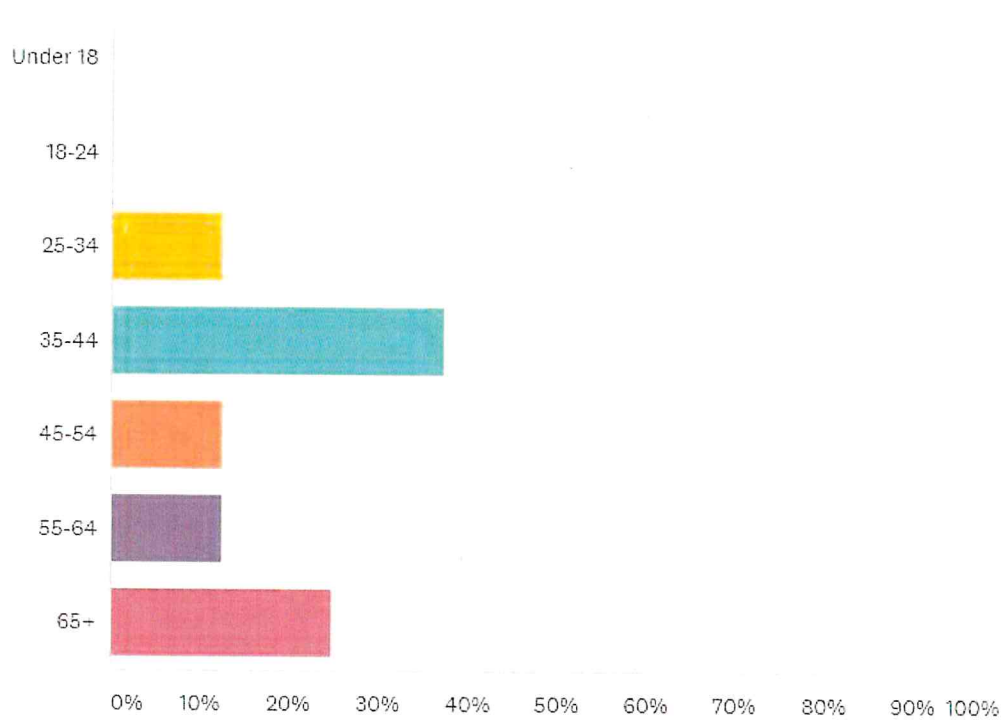
Trails	44.44%	4
Picnic Pavilions	44.44%	4
Picnic Tables	44.44%	4
Benches/places to sit	44.44%	4
Exercise Stations	55.56%	5
Other (please specify)	55.56%	5

Total Respondents: 9



What is your age?

Answered: 8 Skipped: 1



ANSWER CHOICES	RESPONSES	
Under 18	0.00%	0
18-24	0.00%	0
25-34	12.50%	1
35-44	37.50%	3
45-54	12.50%	1
55-64	12.50%	1
65+	25.00%	2
TOTAL		8



Appendix 4: Grant Sources

Playgrounds Grant Source

GameTime

provides a funding guide and also Resources on developing playgrounds.

<https://www.gametime.com/resources/playground-funding-guide>

PlayCore

Provides a database for playground and has innovative playground resources

<https://www.playcore.com/funding/results?country=united-states&state=national&project=>

Trails

Recreational Trails Program

The Recreational Trails Program is a federally funded competitive grant program that provides financial assistance to agencies of city, county, state or federal governments, and organizations, approved by the state, or state and federally recognized Indian tribal governments, for the development of recreational trails, trailheads and trailside facilities. The program has been shifted from the Office of Greenways and Trails to DEP's Land and Recreation Grants Section within the Division of State Lands.

<https://floridadep.gov/lands/land-and-recreation-grants/content/rtp-assistance>

Tara Reynolds, Community Assistance Consultant
Recreational Trails Program, Division of State Lands
Department of Environmental Protection
3800 Commonwealth Blvd.
Tallahassee FL 32399-3000
850.245.2065
Tara.V.Reynolds@floridadep.gov

Dog Parks Grant Source

Nutro Room to Run

The Nutro Room to Run program supports public, non-profit dog parks and off-leash areas. Since 2010, the program has helped enhance over 120 dog parks and committed more than 4,000 volunteer hours across North America. Projects included landscaping and adding trees and other [shade structures](#), as well as adding [benches](#), agility equipment, [signage](#) and more for the enjoyment of pets and pet parents. Check their [website](#) for more info.

PetSafe Bark for Your Park

Through the annual Bark for Your Park competition, PetSafe helps 25 communities across America build and revitalize dog parks. Like applying for grants, there is some information required to enter, so you'll need:

A letter from a civic leader showing support for your project

Photos of your future location or current off-leash dog park

Blueprints of your ideal dog park (be sure to include [agility components!](#))



A summary of how your community would benefit from the park

Ways your community has shown support for a dog park

Click [here](#).

<https://barkforyourpark.petsafe.com/2018-apply#awards>

PlayCore

Provides a database for you can search for dog park funding

<https://www.playcore.com/funding/results?country=united-states&state=national&project=>



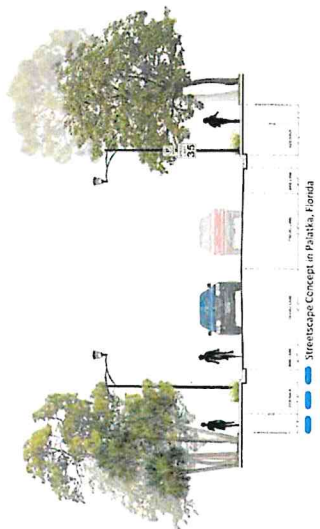
Existing & Proposed Parks & Greenways

City of Springfield, Florida

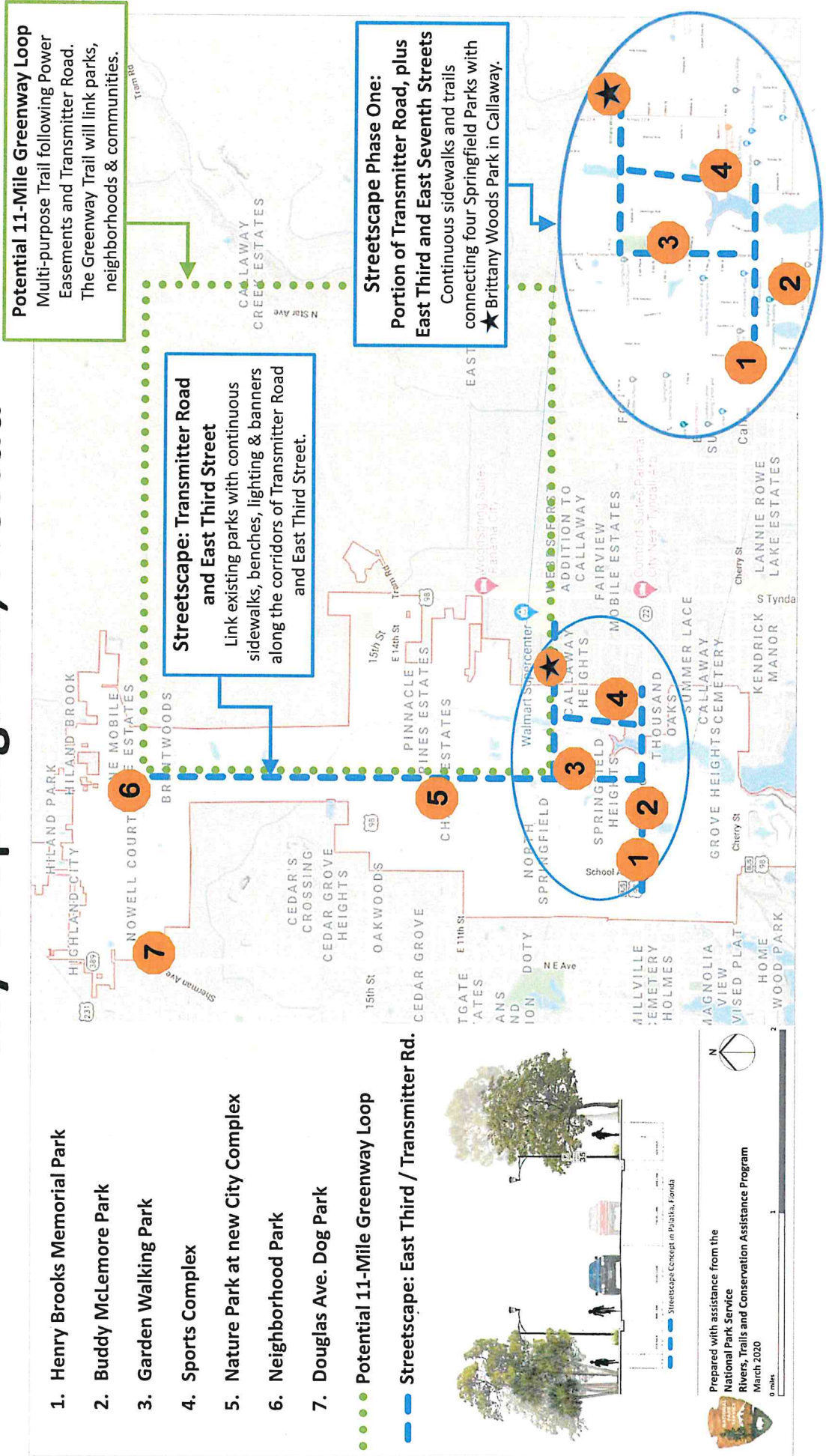
1. Henry Brooks Memorial Park
2. Buddy McLemore Park
3. Garden Walking Park
4. Sports Complex
5. Nature Park at new City Complex
6. Neighborhood Park
7. Douglas Ave. Dog Park

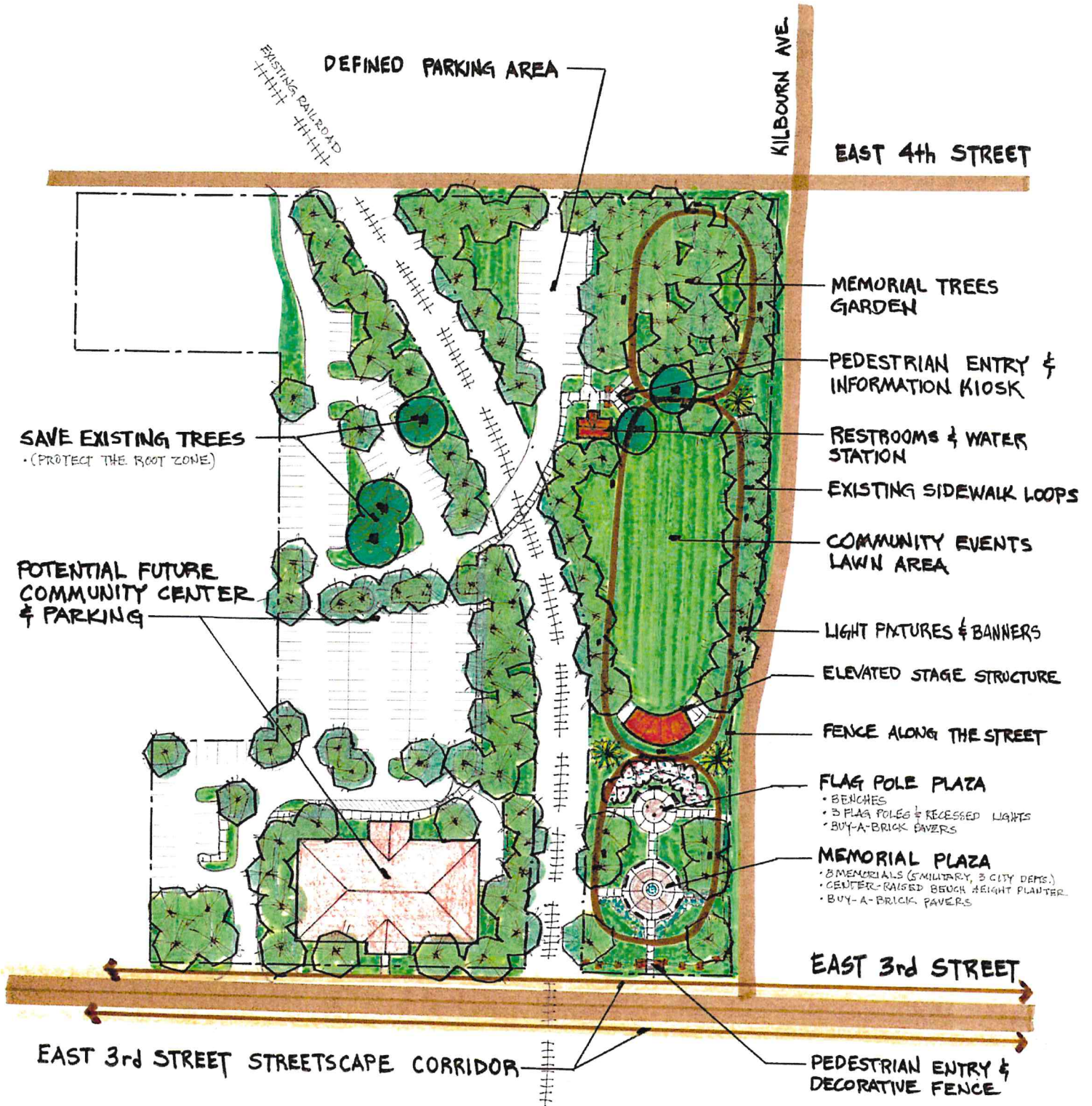
●●●●● Potential 11-Mile Greenway Loop

— Streetscape: East Third / Transmitter Rd.



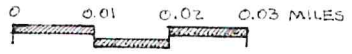
Prepared with assistance from the
National Park Service
Rivers, Trails and Conservation Assistance Program
 March 2020





Master Plan Concept
Henry Brooks Memorial Park

City of Springfield, Florida
 Prepared with assistance from the
 National Park Service
 Rivers, Trails and Conservation Assistance Program
 February 2020



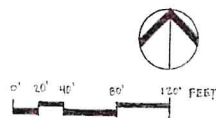


Buddy McLemore Park Master Plan Concept

City of Springfield, Florida



Prepared with assistance from the
 National Park Service
 Rivers, Trails and Conservation Assistance Program
 February 2020



POTENTIAL 11 MILE GREENWAY LOOP TRAIL

E. 7th St.

TRANSMITTER ROAD
STREETScape CORRIDOR

PARKING

TRANSMITTER RD.

PERIMETER MULTI-USE
TRAIL LOOP

SHADE STRUCTURE & BENCHES

TENSILE SHADE STRUCTURE
& BENCHES

GAZEBO

NOTE:
ALL OF THE PROPOSED STRUCTURES
& TREES ARE TO BE REVIEWED
AND APPROVED BY THE UTILITY
COMPANY.

RESTROOMS

LINK TO EAST 3rd St.

SIDEWALK LINKAGE TO
SPORTS PARK

BICYCLE LEARNING
CENTER

RESTROOMS

PLAYGROUND
- PLAY STRUCTURES
- SHADE STRUCTURES & BENCHES
- SANDBOX

TENSILE SHADE
STRUCTURE & BENCHES

FLOATING FOUNTAIN

FLOATING DOCK

BENCH

WALKING TRAIL

FLOATING FOUNTAIN

PERIMETER MULTI-USE
TRAIL LOOP

BENCHES

PARKING

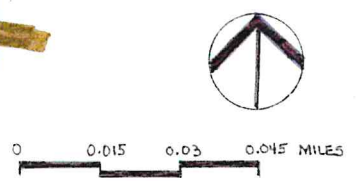
SANTEE DR.

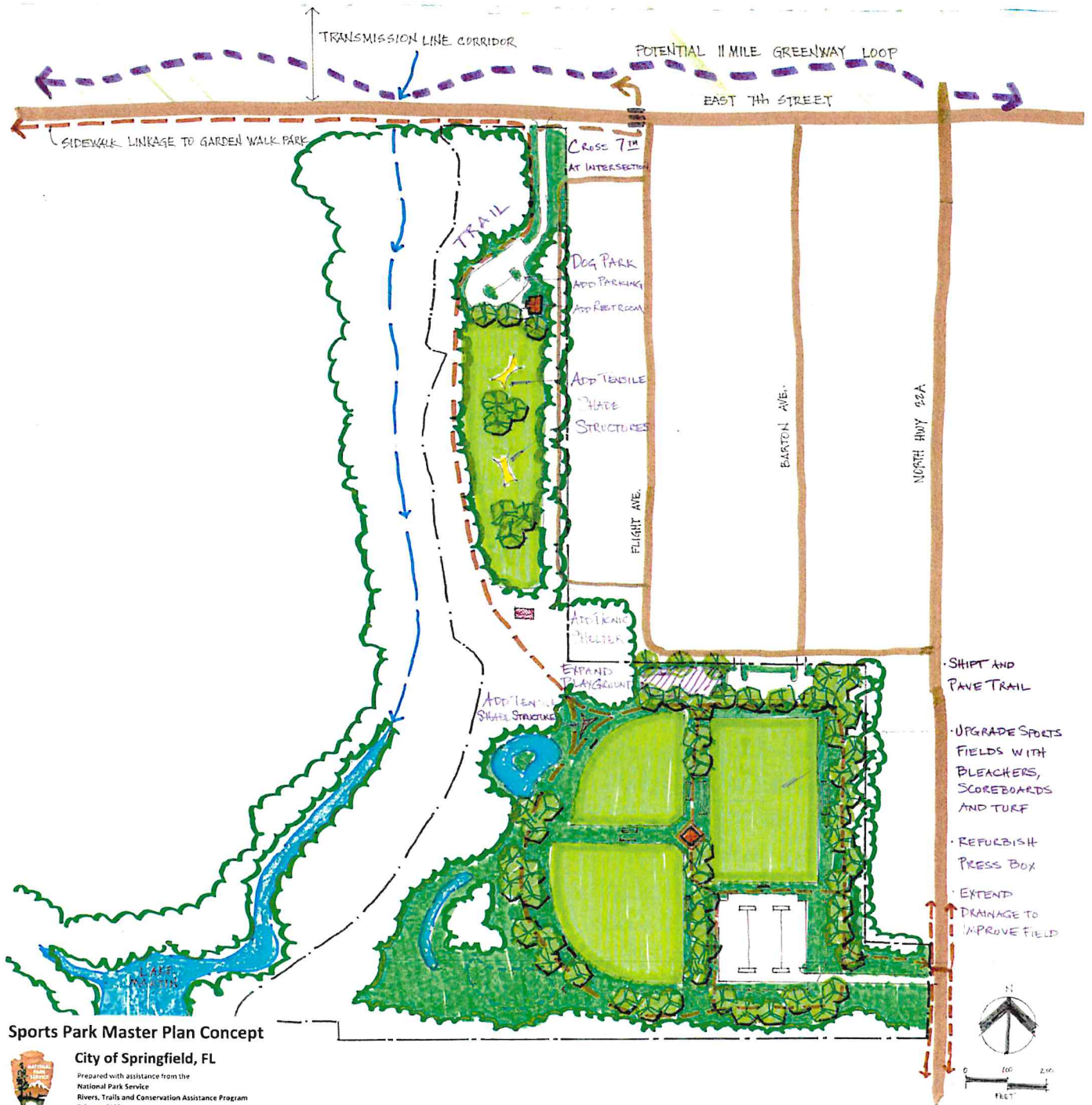
OVERHEAD POWER LINES

Garden Walk Park Concept
City of Springfield, Florida



Prepared with assistance from the
National Park Service
Rivers, Trails and Conservation Assistance Program
February 2020



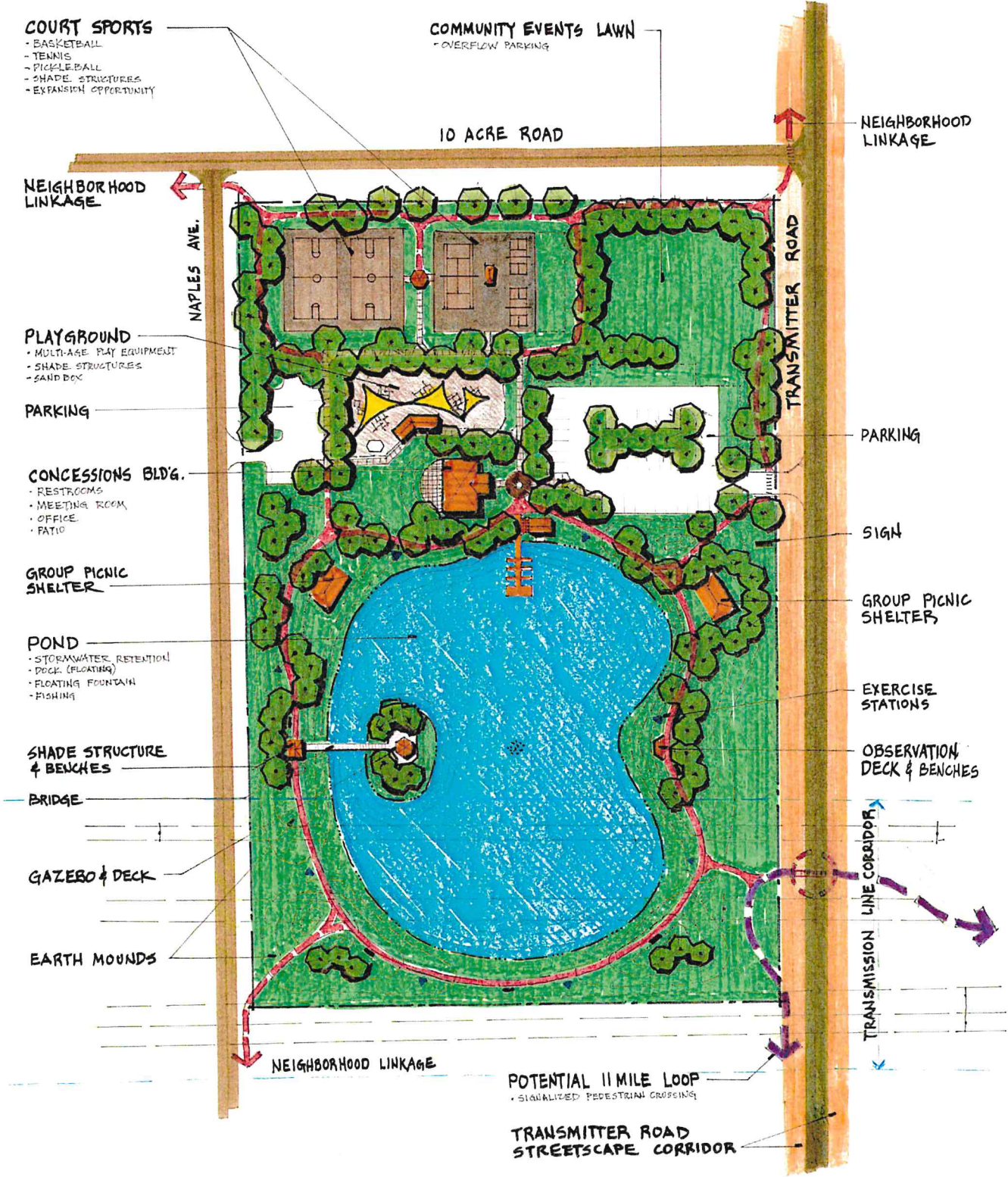


Sports Park Master Plan Concept



City of Springfield, FL
Prepared with assistance from the
National Park Service
Rivers, Trails and Conservation Assistance Program
February 2020





Neighborhood Park Master Plan Concept

(Intersection of 10 Acre Road & Transmitter Road)



City of Springfield, Florida
 Prepared with assistance from the
 National Park Service
 Rivers, Trails and Conservation Assistance Program
 February 2020



DOUGLAS AVENUE

FUTURE SIDEWALK

ATT UTILITIES

FENCE

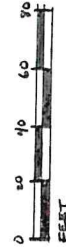
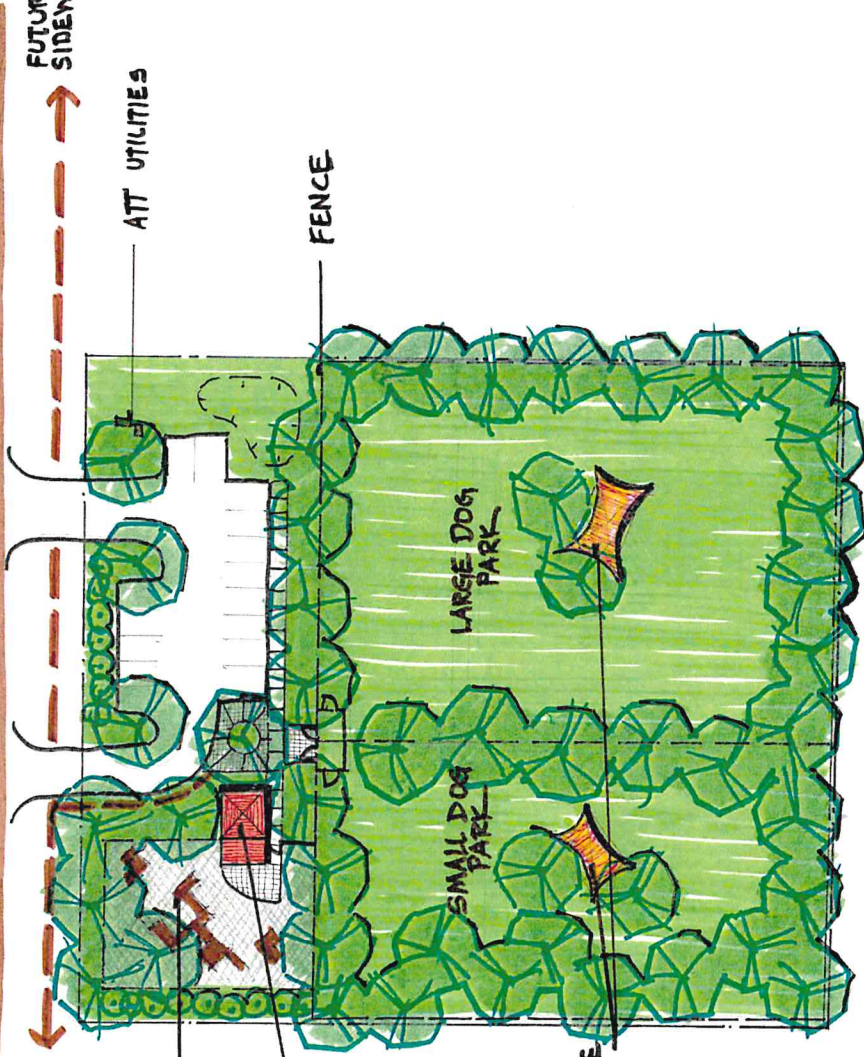
PLAYGROUND

RESTROOMS & SHADED PATIO

LARGE DOG PARK

SMALL DOG PARK

TENSILE MEMBRANE STRUCTURES & PATIOS



Douglas Avenue Park Master Plan Concept

City of Springfield, Florida
 Prepared with assistance from the
 National Park Service
 Rivers, Trails and Conservation Assistance Program
 February 2020

